

WE MET AT
Jamboree

Impact Report

Jamboree is an artist-led project initiated by LOW PROFILE, designed in response to their own identified needs to connect with others. **Jamboree** events bring together artists, curators and arts professionals from across the UK to meet each other, broaden personal professional networks and connections, and go on to form long-lasting, meaningful and productive relationships.

To date, there have been two successful iterations of **Jamboree**:

Jamboree #1 (2015) — developed in partnership with (and hosted by) *PAC Home*, Plymouth Arts Centre's associate programme; with the support of *a-n The Artists Information Company*, *Plymouth Culture* and six UK artists' associate schemes.

Jamboree 2018 — developed in partnership with *a-n The Artists Information Company* and *Plymouth College of Art*. The event was supported by a national network of bursary partner organisations and public funding by the *National Lottery* through *Arts Council England*.

This report gathers together LOW PROFILE's findings two years on from the **Jamboree** 2018 event to make a compelling case for ambitious artist-led professional development that is sector-supported.

Compiled in December 2020, all data and quotes in this report are drawn from 49 of **Jamboree** 2018's 150 total participants.

LOW PROFILE is a collaboration between artists Rachel Dobbs (IRL) and Hannah Rose (UK). They have been working in collaboration since 2003 and are based in Plymouth (UK). Find out more at: we-are-low-profile.com

Supporting a creative and cultural country through collaboration and connection



*"Taking part in **Jamboree** has made me feel more connected to my wider community of fellow artists and makers, and boosted my sense of myself as a practitioner. This has impacted my confidence in making applications for residencies and other opportunities."*

Supporting a creative and cultural country through collaboration and connection



Jamboree offers organisations a practical opportunity to work collaboratively — to learn from each other, share resources and jointly develop talent.

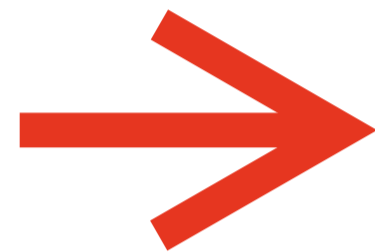
Jamboree works to remove geographic, economic and social barriers preventing artists, curators and other arts professionals from taking part in and benefiting from publicly funded cultural activity via its Bursary Scheme.

Jamboree supports practitioners and organisations to connect nationally — sharing and exchanging diverse skills, knowledge and experiences.

"Jamboree helped me link with artists outside the region and in general was such an amazing breath of fresh air. I really feel like we need something like this regularly to get artists together and to talk about how we can work together with more solidarity."

Supporting a creative and cultural country through collaboration and connection

"Through being a part of **Jamboree** 2018, I am now looking at ways to access this model in Sussex as it is the best practice I know of to nurture and develop artist practice with support from institutions, but without the restriction of institutional authorship."

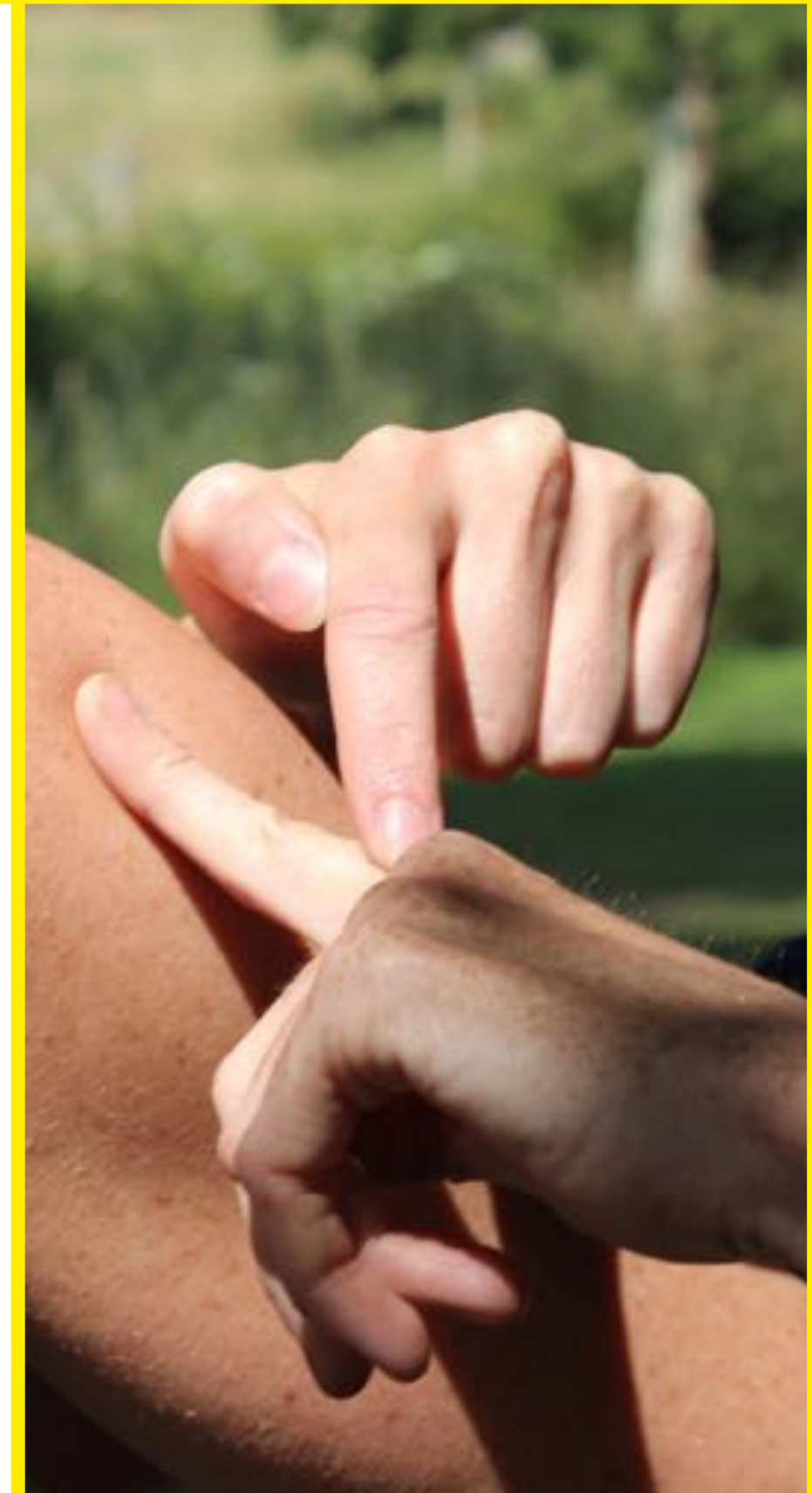


12 national and regional organisations (across 6 UK regions) partnered to make Jamboree 2018 happen.

22 different towns and cities across England, Wales and Northern Ireland benefited due to practitioners from those areas attending.

36 practitioners supported via the **Jamboree** Bursary Scheme in 2018 (25% of participants).

"Before **Jamboree**, we didn't really have a meaningful support network or relationship to many places outside London and this really bothered us both .. Since then, we have travelled regionally and from these little inroads have continued to build up knowledge of different contexts and alliances with practitioners doing aligned work/interests etc."



***Sustaining livelihoods
in the creative sector by
establishing productive
relationships***



"The ripple effect is quite fantastic!"

Sustaining livelihoods in the creative sector by establishing productive relationships



Jamboree supports practitioners to form long-lasting, meaningful and productive relationships with other practitioners. Wider audiences benefit from ***Jamboree*** through experiencing the public facing activities and outcomes that are generated off the back of participants attending the event. Productive relationships are:

- ~ those that lead to new professional opportunities (gigs)
- ~ and/or those that offer sustenance and fuel to help practitioners sustain, enrich and grow their practices and livelihoods, which might include things like:
 - > supportive peer relationships that form through attending ***Jamboree***
 - > establishing groups
 - > establishing on-going working relationships
 - > new relationships for critical input, guidance and feedback (eg mentoring)

Sustaining livelihoods in the creative sector by establishing productive relationships

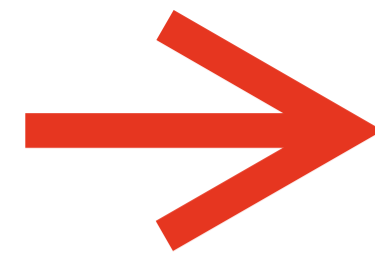
*"I proposed a series of [a **Jamboree** artist]'s works to be purchased and become part of the FRAC Champagne-Ardenne collection. This is the first time [this **Jamboree** artist]'s work has become part of a museum collection - something which I think is really important for [their] work to do; to be cared for and looked after for the future."*

Jamboree works to broaden personal professional networks and connections to more actively include freelance cultural workers with diverse experiences — sharing opportunities to lessen the geographic, economic and social barriers that currently prevent many artists, curators and arts professionals from fully participating in the arts sector.

"I now have regular critical input from some individuals, with some we have initiated new projects and collaborations, and in these difficult Covid times have people I can turn to. This has very much offered sustenance and fuel to continue during difficult times, as well as people being a great source of inspiration and resource."



Sustaining livelihoods in the creative sector by establishing productive relationships



191 new professional opportunities (gigs) reported (including self-initiated opps)

£67,119 new income generated for surveyed participants

78,625 people engaged with, saw or took part in participants' new work and projects

18 new groups, collectives, collaborations or creative partnerships formed

25 new or enhanced relationships for critical input, guidance and feedback



"[Jamboree] has led to a number of strong friendships developing, which crosses over into peer support and networking, as these individuals have shared contacts, opportunities and in general been great friends and encouraged my art practice and career."

*Supporting creative people
and cultural communities
through diy practice
and projects*

*"I developed techniques for gently taking people out of their comfort zones having fostered some camaraderie informed by **Jamboree** events, and I have done so to create bonds and stronger relationships so people can better open up about themselves, their practices and develop as professional artists and confident people."*

Supporting creative people and cultural communities through diy practice and projects

Jamboree is a grass-roots approach to feeding into the arts ecology. **Jamboree** is a space for ideas to begin, be tested, percolate or ferment — encouraging others to establish and support artist-led projects & activity where they live.

Jamboree supports participants to develop peer-to-peer models for developing their skills and best practice to bring back into their own work and/or communities.

Jamboree actively shares its model and encourages others to establish and support artist-led professional development activity.



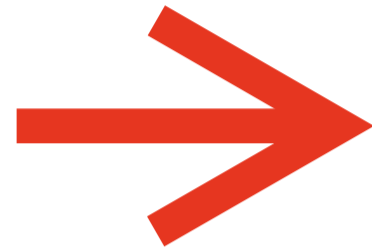
*"I developed ideas triggered at **Jamboree** into a proposal for a £5k engaged practice project in Ebbsfleet called Chalk and Cheese. This involved working with groups in both established towns and culminated in a community event in March 2019."*



Supporting creative people and cultural communities through diy practice and projects

"Attending **Jamboree** gave me the confidence and a way in to volunteer my time to help establish CAMP, which has been the single most valuable thing in my art practice to date."

"The value of collaboration and co-op working was reinforced for me — I have since been getting more involved in co-op networks locally and nationally to seek different ways of working with the community."



93 mentions of new activities beginning, being tested, percolated or fermenting as a result of **Jamboree**.

96% of participants surveyed cite the importance of **Jamboree** in establishing and supporting their own artist-led professional development activity.

45 participants report actively using aspects of the **Jamboree** model in their own projects



***Helping artists and curators
to be adaptable, and to
circulate knowledge and skills
by meeting new people and
strengthening and extending
networks***

"[Jamboree] enabled me to meet and have conversations with people in roles that I aspire to hold, and with people who have facilitated projects in innovative and unique ways that are an inspiration to my practice and the communities I work with."

Helping artists and curators to be adaptable, and to circulate knowledge and skills by meeting new people and strengthening and extending networks

Jamboree brings together a mix of practitioners who otherwise wouldn't normally meet. It strengthens local networks in the region where events are held, whilst expanding and extending practitioners networks far past their own locality. ***Jamboree*** aims to increase the visibility of participants (during and after the events).

Jamboree is a peer-to-peer model for learning and exchange. ***Jamboree*** actively improves understanding of various modes of operating and career trajectories for attendees. Participants identify new ways of doing things and develop new creative strategies, drawing from the experiences of others to further grow and sustain their own practices in ways that suit them.



*"I have gone on to incorporate [ideas I encountered at **Jamboree**] into a freelance project delivered in 2018/2019 encompassing both food and art materials, and it continues to be a perspective through which I programme projects at [the arts organisation I work for] in partnership with community groups and Food Banks."*

Helping artists and curators to be adaptable, and to circulate knowledge and skills by meeting new people and strengthening and extending networks

*"I'd credit **Jamboree** with giving me the confidence to approach working in quite a different way (moving into community focused/public artwork) and successfully completing a large-scale commission at Ty Pawb in Wrexham."*

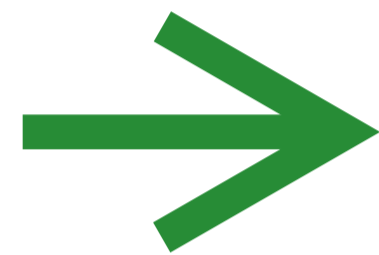
Jamboree sustains peer-support networks to share learning on how practitioners can:

- ~ develop new cultural opportunities and creative activities in rural and urban areas across the country
- ~ work as part of their local communities to shape and reshape cultural provision and activity
- ~ become more active contributors to the places where they live, work, study and visit



Helping artists and curators to be adaptable, and to circulate knowledge and skills by meeting new people and strengthening and extending networks

"The most important quality of the experience for me [was] the opportunity to do new things, try new things, meet new people... Newness allows us to dream in different ways we couldn't have foreseen."



23 connections made (on average) by each participant at **Jamboree**

65% of all participants in 2018 presented their work formally in one or more strands of the co-delivered programme

67% of participants surveyed cited **Jamboree** as important to strengthening their local networks

55% of participants surveyed cited **Jamboree's** help in extending their networks far past their own locality

*"Off the back of **Jamboree** 2018, I instigated a social meeting group for artists in West Cornwall. We share our work experiences to support each other in negotiating fees, terms, applications. We encourage each other and work together. Collaborations have been born and plans are hatched for group exhibition projects beyond Cornwall and the UK."*

***Jamboree is inclusive,
welcoming and
non-hierarchical***



"The event and activity felt horizontal, close to the ground, in the sense that everyone felt they were there on an equal footing — making, showing, presenting, taking part was all integrated."

***Jamboree is inclusive,
welcoming and non-hierarchical***

"[Jamboree] has reinforced the idea of artists as capable, resourceful and active in our own destiny. Confidence is a hard thing to quantify, but Jamboree helped to build it."

Jamboree is participant built. It creates programmes that are inclusive, non-hierarchical and welcoming, which invite practitioners with a range of practices and approaches to present their work and ideas. The programme acts as a framework for participants to intervene in, take charge of and 'own'.

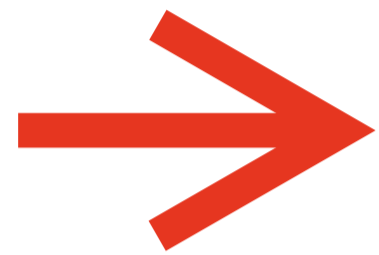
Jamboree creates spaces that feel socially comfortable and make it as easy as possible for participants to attend and engage with. Care and attention is given to participants' wellbeing and experience of being at the events in a way that promotes generosity and looking out for each other, and values everyone that has made the effort to be there.

Jamboree models approaches for creating improved physical and mental wellbeing for practitioners, and for those they work with in their own communities.



Jamboree is inclusive, welcoming and non-hierarchical

"De-centred, grassroots non-institutional model that puts artists at the centre — I think we all want to remake the artworld so it works for artists rather than exploits them and I see this kind of autonomous model as the first step. Being able to GATHER and have conversations and think about the future and how to work together is utterly vital — and we need more of it!"



93% of participants surveyed specifically mentioned, described or talked about the importance of **Jamboree** being inclusive, non-hierarchical and welcoming.

98% of participants surveyed said that they found meeting and talking to people at **Jamboree** easy or really easy.

"[Jamboree] was good for morale: it made me feel part of something, when often being an artist can be very lonely."



Providing financial and professional development opportunities for those who work on delivering the project



*“Working on **Jamboree** challenged my skill set and gave me new experiences of managing a full team across the event.”
— **Jamboree** 2018 producer.*

Providing financial and professional development opportunities for those who work on delivering the project

*“Working on **Jamboree** got me thinking about the impact of decisions I make on others, both within the art world and in a wider context. How can I stay true to my ethics and pursue what makes me happy within the structures set by society and its institutions?” — **Jamboree** 2018 steward.*

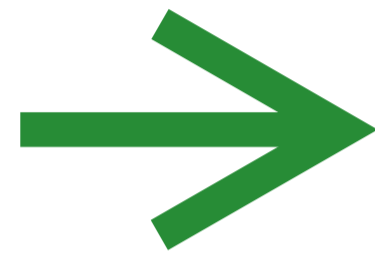


Jamboree offers financial and professional development opportunities for those who work on delivering the project. Whenever possible this includes providing training and ‘first time’ experiences for team members with support in the lead up to, during and after the event.

*“During my **Jamboree** internship, I gained insight into how events are planned and run; sourcing aspects on minimal budgets; hosting presentation sessions; stocktaking and accounting. Having a strong example of how to successfully plan and run an event on the scale of **Jamboree** has helped me in planning future events of my own.” — **Jamboree** 2018 intern.*



Providing financial and professional development opportunities for those who work on delivering the project



18 creative freelancers paid via *Jamboree* 2018

191 days of employment via *Jamboree* 2018

16 training and 'first time' experiences for team members at *Jamboree* 2018 (including Interns and Observer roles)

"Jamboree increased my knowledge of artists and practice across the country, and it is certainly having an impact on my thinking about future work and being motivated to be ambitious and think big about the impact of projects I could initiate."
— *Jamboree* 2018 producer.



We Met At **Jamboree**: Impact Report

Jamboree is devised & curated by LOW PROFILE
we-are-low-profile.com
artistsjamboree.uk

Jamboree 2018 was supported using public funding by the *National Lottery* through *Arts Council England*, and developed in partnership with *a-n The Artists Information Company* and *Plymouth College of Art*.

Jamboree 2018 was also made possible with the valuable support of *Plymouth Culture*, *VASW (Visual Art South West) CVAN NW*, *PAC Home (Plymouth Arts Centre)*, *WARP (g39, Cardiff)*, *Extra Special People (Eastside Projects, Birmingham)*, *CG Associates (Castlefield Gallery, Manchester)*, *Spike Associates (Spike Island, Bristol)*, *Somerset Art Works* and *The Newbridge Project (Newcastle)*.

Designed by Conway and Young
conwayandyoung.com

Typeset in strokeWeight



Supported using public funding by
**ARTS COUNCIL
ENGLAND**